

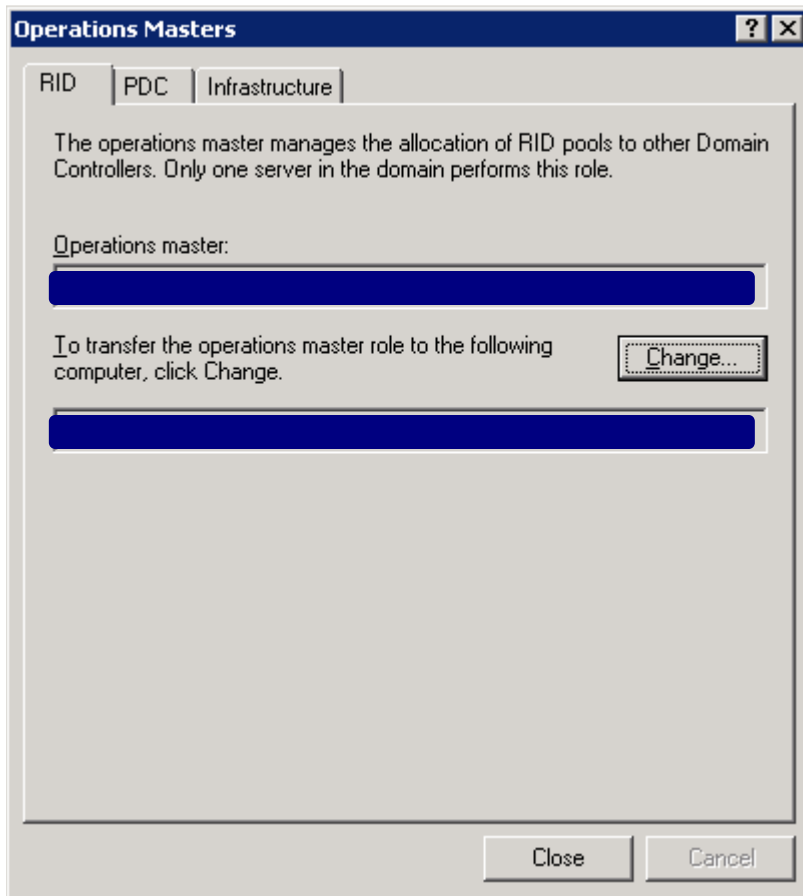
# TRANSFERRING FSMO ROLES

## ~ WINDOWS SERVER ~

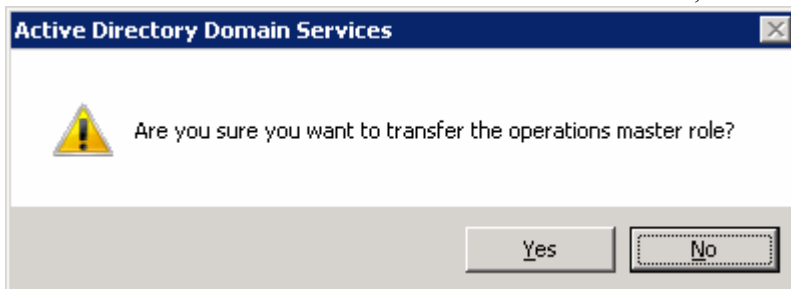
TO TRANSFER THE RID, PDC AND INFRASTRUCTURE ROLES...

OPEN "ACTIVE DIRECTORY USERS AND COMPUTERS"  
RIGHT-CLICK ON YOUR DOMAIN AND CHOOSE "OPERATIONS MASTERS..."

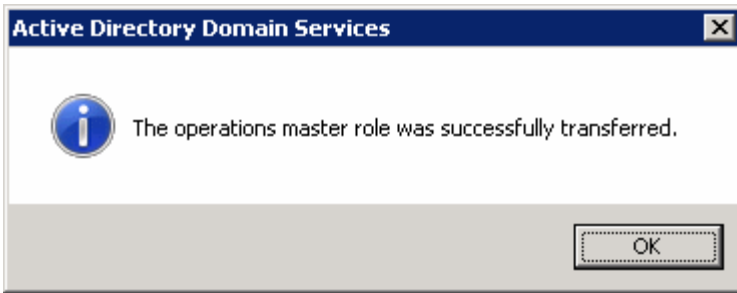
THREE OF THE FIVE FSMO ROLES ARE AVAILABLE



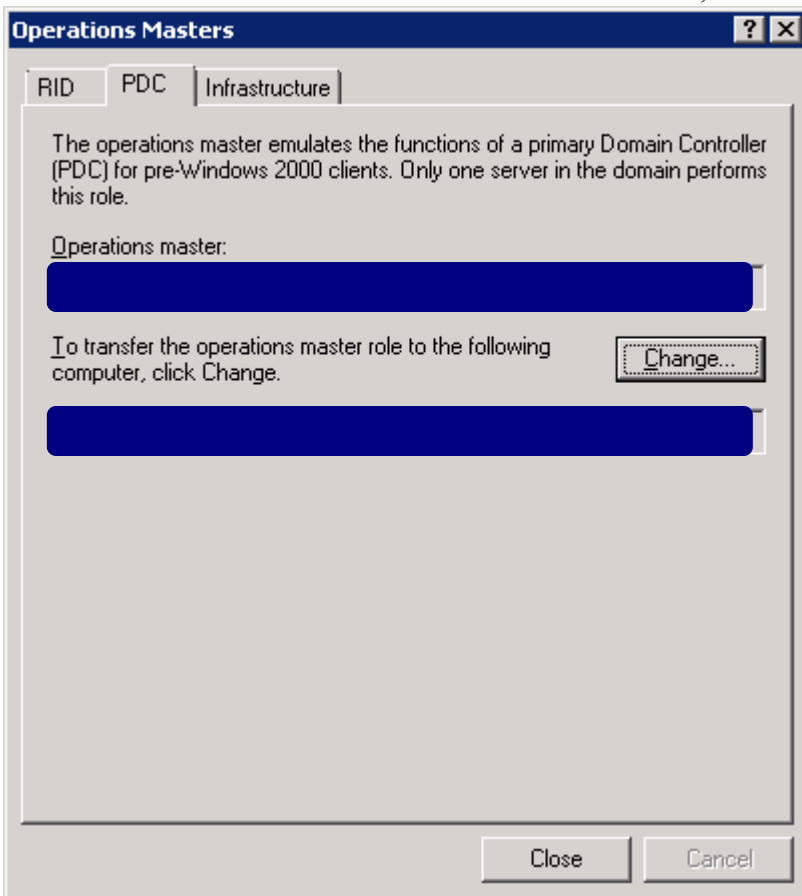
TO CHANGE THE RID OPERATIONS MASTER, CLICK THE "CHANGE" BUTTON



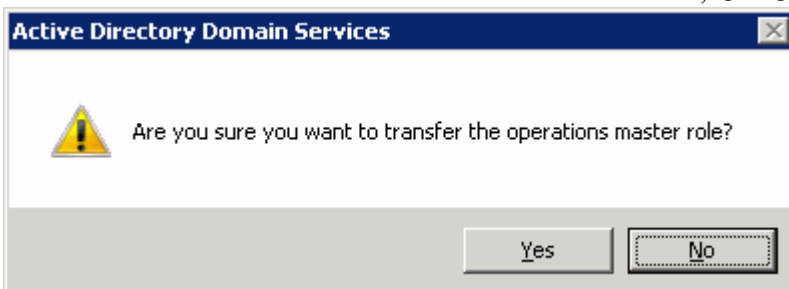
CONFIRM YOU WOULD LIKE TO TRANSFER THE ROLE



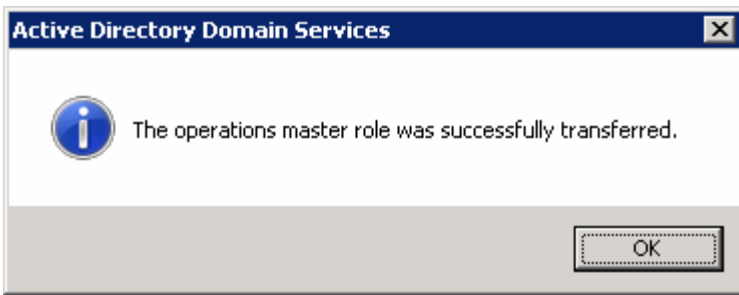
THE RID OPERATIONS MASTER ROLE HAS BEEN SUCCESSFULLY BEEN TRANSFERRED  
TO CHANGE THE PDC OPERATIONS MASTER, **CLICK** THE "CHANGE" BUTTON



TO CHANGE THE PDC OPERATIONS MASTER, **CLICK** THE "CHANGE" BUTTON

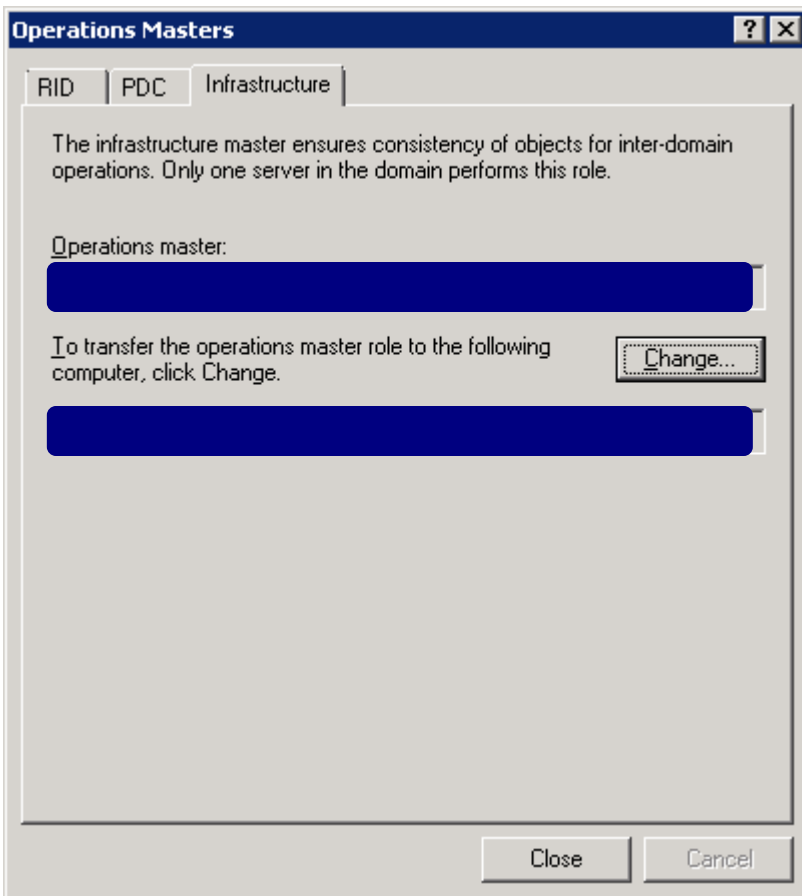


CONFIRM YOU WOULD LIKE TO TRANSFER THE ROLE

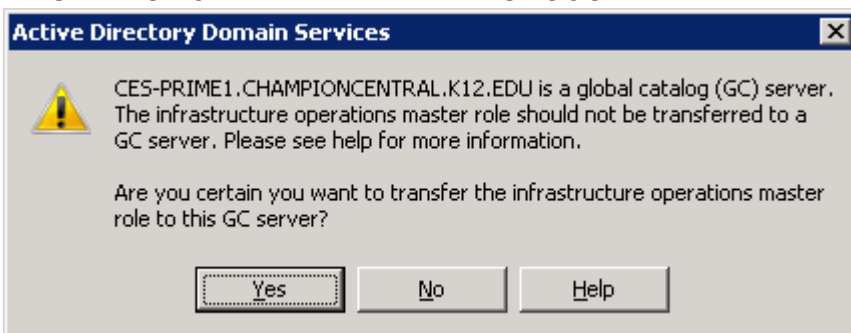


THE PDC OPERATIONS MASTER ROLE HAS BEEN SUCCESSFULLY BEEN TRANSFERRED

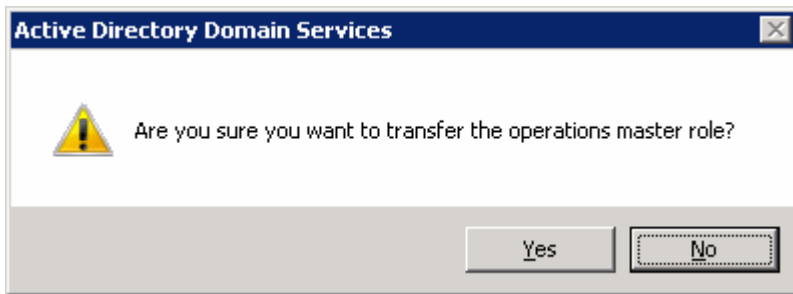
TO CHANGE THE INFRASTRUCTURE OPERATIONS MASTER, **CLICK THE "CHANGE" BUTTON**



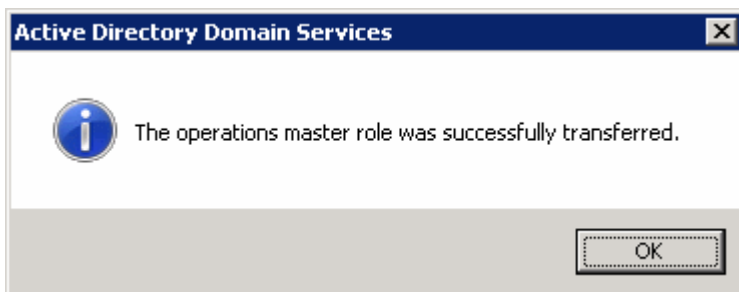
**WARNING: THE INFRASTRUCTURE ROLE IS PASSING TO A GLOBAL CATALOG SERVER... BEFORE TRANSFERRING THIS ROLE, VERIFY HOW YOUR ENTIRE NETWORK IS CONSTRUCTED. IF THIS IS A SINGLE DOMAIN NETWORK, THEN TRANSFERRING THIS ROLE SHOULDN'T EFFECT THE OPERATION OF THE NETWORK. IF THE NETWORK IS ASSOCIATED IN A CROSS-DOMAIN RELATIONSHIP, THEN DON'T TRANSFER THIS ROLE AND SEEK EXCEPTIONS EXPLAINED BY MICROSOFT.**



TO CHANGE THE INFRASTRUCTURE OPERATIONS MASTER, **CLICK** THE "CHANGE" BUTTON



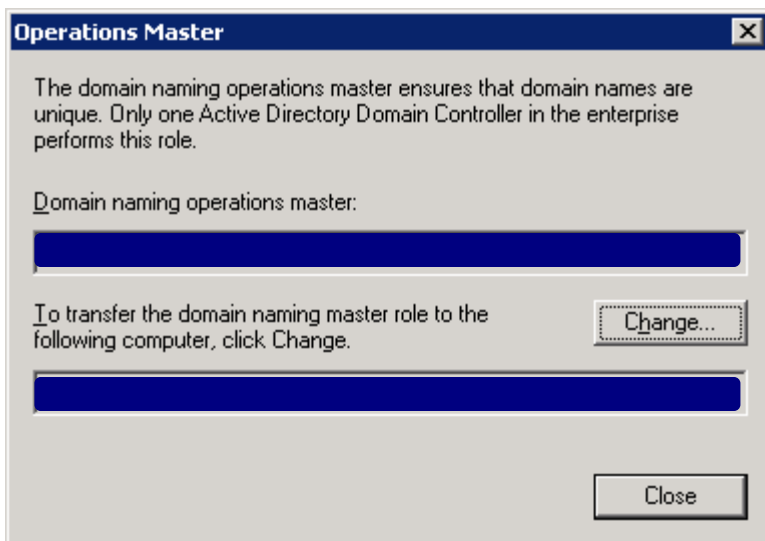
CONFIRM YOU WOULD LIKE TO TRANSFER THE ROLE



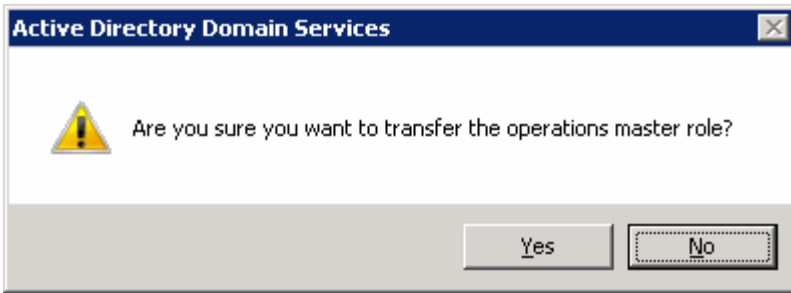
THE INFRASTRUCTURE OPERATIONS MASTER ROLE HAS BEEN SUCCESSFULLY BEEN TRANSFERRED

TO TRANSFER THE DOMAIN NAMING ROLE

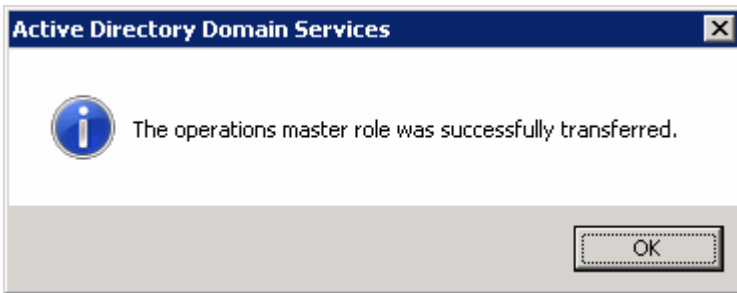
OPEN "ACTIVE DIRECTORY DOMAINS AND TRUSTS"  
**RIGHT-CLICK** ON YOUR DOMAIN AND **CHOOSE**"OPERATIONS MASTERS..."



TO CHANGE THE DOMAIN NAMING OPERATIONS MASTER, **CLICK** THE "CHANGE" BUTTON



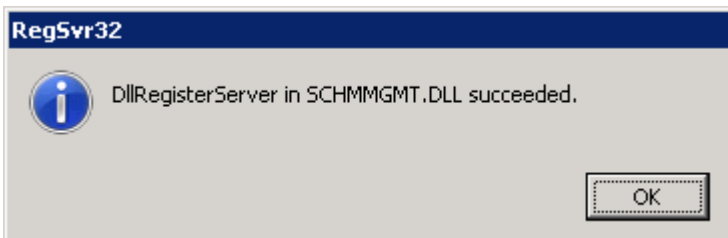
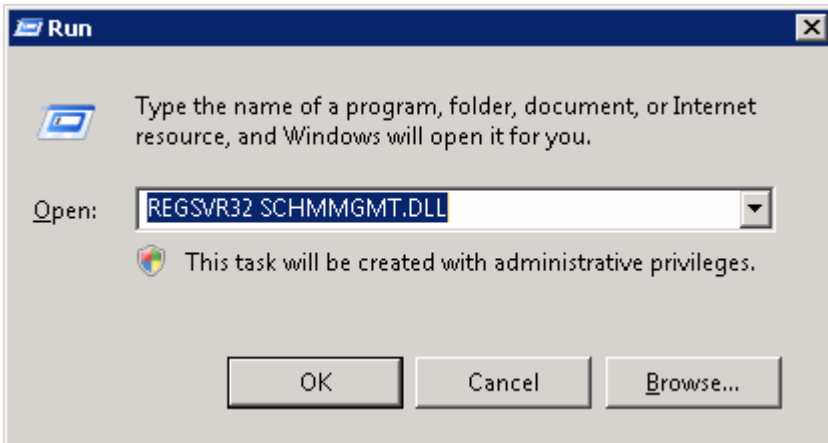
CONFIRM YOU WOULD LIKE TO TRANSFER THE ROLE



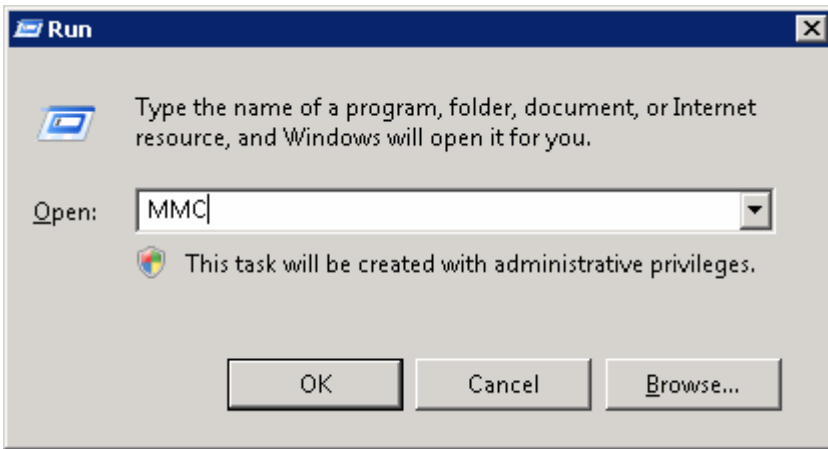
THE DOMAIN NAMING OPERATIONS MASTER ROLE HAS BEEN SUCCESSFULLY BEEN TRANSFERRED

TO TRANSFER THE SCHEMA ROLE...

OPEN THE RUN COMMAND AND TYPE "REGSVR3 SCHMMGMT.DLL"

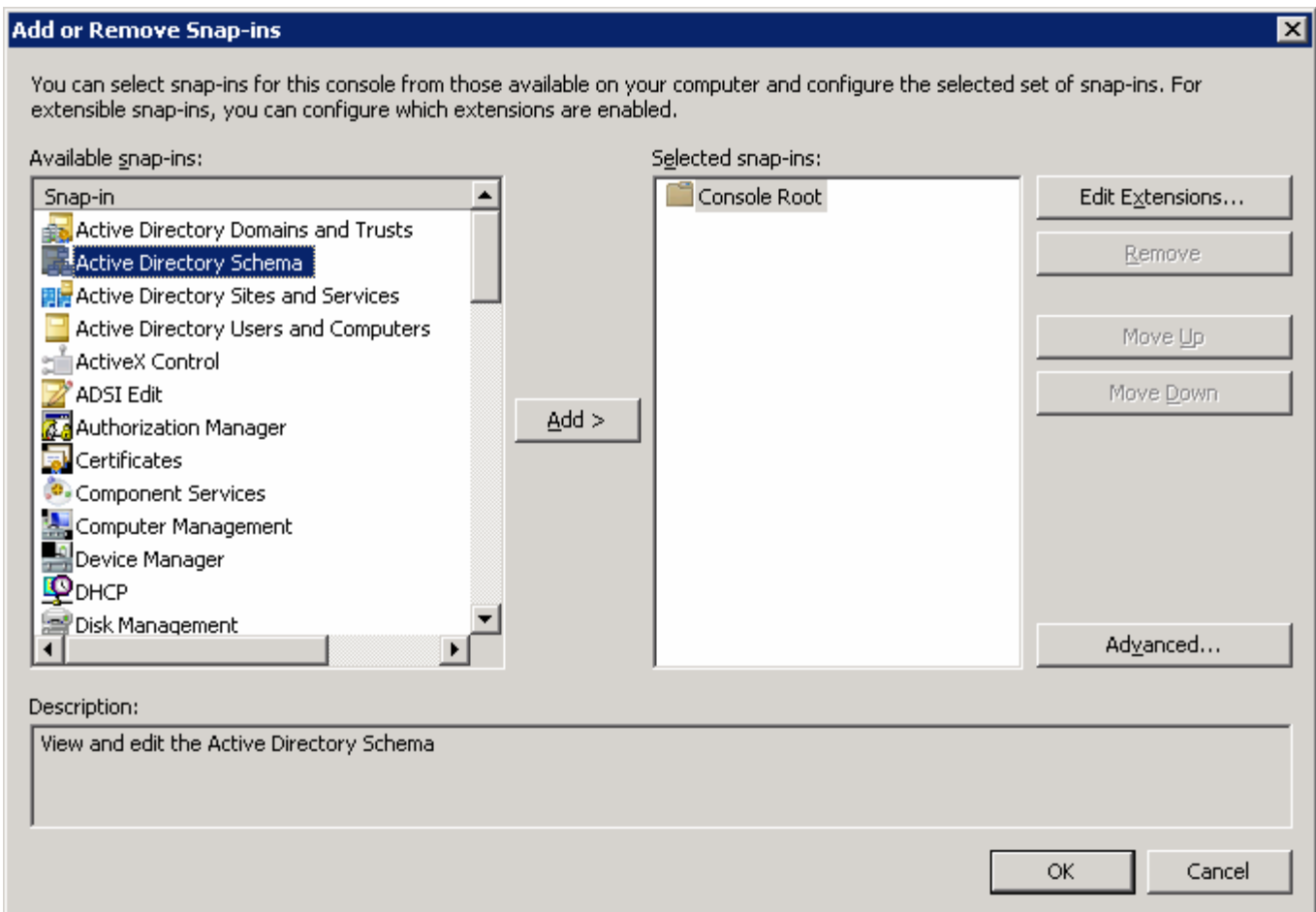


OPEN THE RUN COMMAND AND TYPE "MMC"

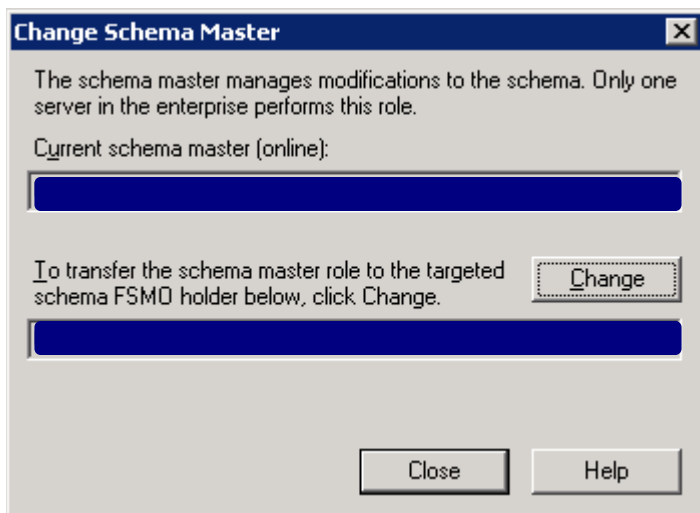
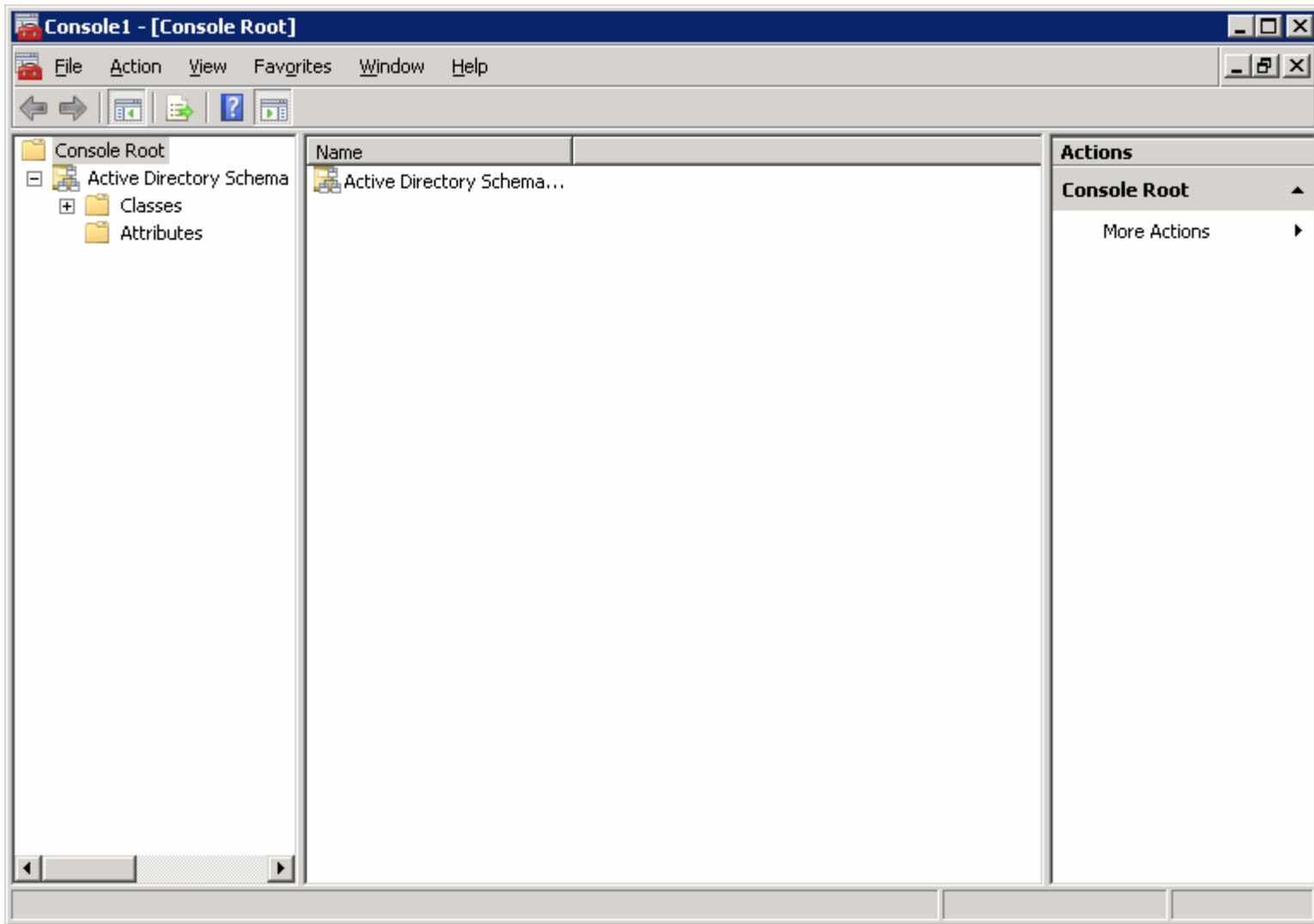


**SELECT "FILE" AND CHOOSE "ADD/REMOVE SNAP-IN..."**

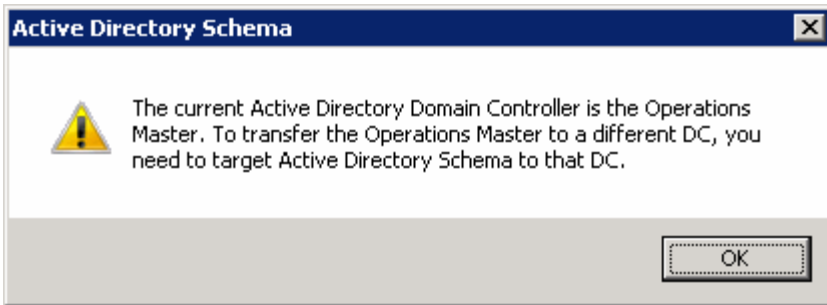
**SELECT "ACTIVE DIRECTORY SCHEMA" AND ADD THE SNAP-IN**



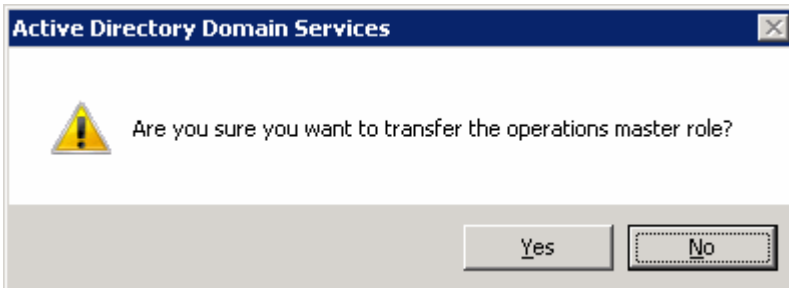
**RIGHT-CLICK ON "ACTIVE DIRECTORY SCHEMA" AND CHOOSE "OPERATIONS MASTER..."**



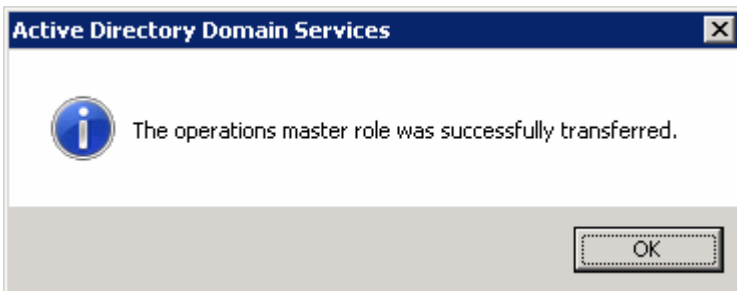
TO CHANGE THE SCHEMA OPERATIONS MASTER, **CLICK THE "CHANGE" BUTTON**



**TARGET THE NEW SCHEMA MASTER**



**CONFIRM YOU WOULD LIKE TO TRANSFER THE ROLE**



**THE SCHEMA OPERATIONS MASTER ROLE HAS BEEN SUCCESSFULLY BEEN TRANSFERRED**

**NOTE:** DUE TO THE SECURITY OF THE NETWORK USED IN THIS EXAMPLE, THE SPECIFICS OF THE DC CONFIGURATION OF BEEN HIDDEN. THE MISSING DATA WILL BE REPLACED WITH THE SPECIFICS OF YOUR DC CONFIGURATION. IF YOU HAVE ANY QUESTIONS OR CONCERNS, PLEASE CALL HUCOR TECHNOLOGIES AT 330-219-8301.