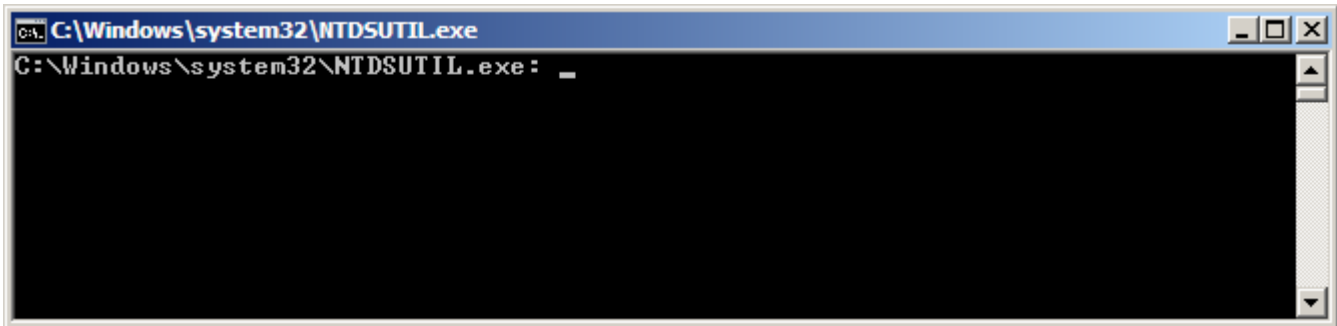


CLEANING UP METADATA

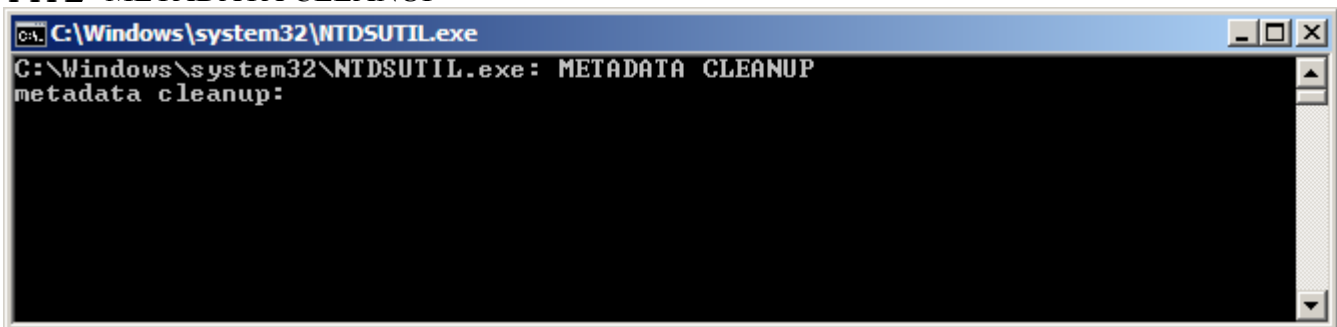
~ WINDOWS SERVER 2008 ~

OPEN THE RUN COMMAND AND TYPE "NTDSUTIL"



```
C:\Windows\system32\NTDSUTIL.exe
C:\Windows\system32\NTDSUTIL.exe: _
```

TYPE "METADATA CLEANUP"



```
C:\Windows\system32\NTDSUTIL.exe
C:\Windows\system32\NTDSUTIL.exe: METADATA CLEANUP
metadata cleanup:
```

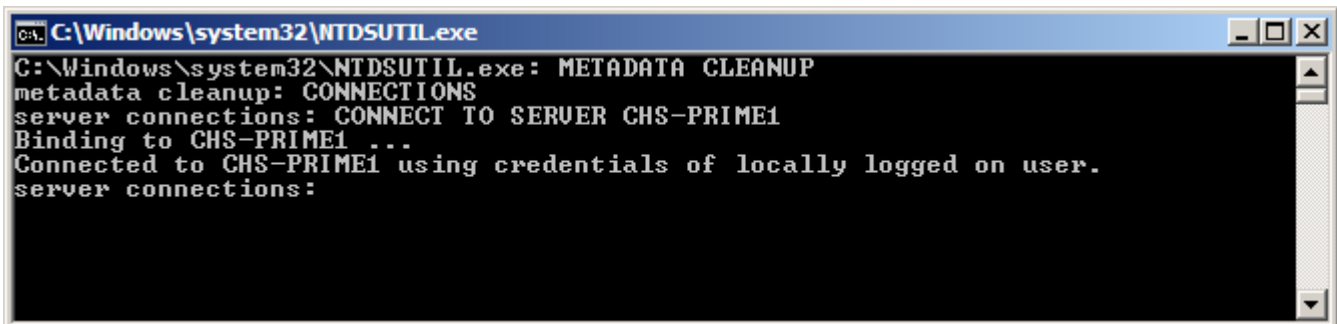
TYPE "CONNECTIONS"



```
C:\Windows\system32\NTDSUTIL.exe
C:\Windows\system32\NTDSUTIL.exe: METADATA CLEANUP
metadata cleanup: CONNECTIONS
server connections: _
```

TYPE "CONNECT TO SERVER %SERVERNAME%"

- REPLACE %SERVERNAME% WITH THE NAME OF THE SERVER



```
C:\Windows\system32\NTDSUTIL.exe
C:\Windows\system32\NTDSUTIL.exe: METADATA CLEANUP
metadata cleanup: CONNECTIONS
server connections: CONNECT TO SERVER CHS-PRIME1
Binding to CHS-PRIME1 ...
Connected to CHS-PRIME1 using credentials of locally logged on user.
server connections:
```

STEP BACKWARDS IN THE NTDSUTIL MENU, TYPE "Q"

```
C:\Windows\system32\NTDSUTIL.exe
C:\Windows\system32\NTDSUTIL.exe: METADATA CLEANUP
metadata cleanup: CONNECTIONS
server connections: CONNECT TO SERVER CHS-PRIME1
Binding to CHS-PRIME1 ...
Connected to CHS-PRIME1 using credentials of locally logged on user.
server connections: Q
metadata cleanup:
```

TYPE "SELECT OPERATION TARGET"

```
C:\Windows\system32\NTDSUTIL.exe
C:\Windows\system32\NTDSUTIL.exe: METADATA CLEANUP
metadata cleanup: CONNECTIONS
server connections: CONNECT TO SERVER CHS-PRIME1
Binding to CHS-PRIME1 ...
Connected to CHS-PRIME1 using credentials of locally logged on user.
server connections: Q
metadata cleanup: SELECT OPERATION TARGET
select operation target: _
```

TYPE "LIST DOMAIN"

```
C:\Windows\system32\NTDSUTIL.exe
C:\Windows\system32\NTDSUTIL.exe: METADATA CLEANUP
metadata cleanup: CONNECTIONS
server connections: CONNECT TO SERVER CHS-PRIME1
Binding to CHS-PRIME1 ...
Connected to CHS-PRIME1 using credentials of locally logged on user.
server connections: Q
metadata cleanup: SELECT OPERATION TARGET
select operation target: LIST DOMAIN
Found 1 domain(s)
0 - DC=, DC=k12,DC=edu
select operation target:
```

TYPE "SELECT DOMAIN %DOMAIN_NUMER%"

- REPLACE %DOMAIN_NUMER% WITH THE FAILED SERVER'S DOMAIN'S NUMBER

```
C:\Windows\system32\NTDSUTIL.exe
server connections: Q
metadata cleanup: SELECT OPERATION TARGET
select operation target: LIST DOMAIN
Found 1 domain(s)
0 - DC=, DC=k12,DC=edu
select operation target: SELECT DOMAIN 0
No current site
Domain - DC=, DC=k12,DC=edu
No current server
No current Naming Context
select operation target: _
```

TYPE "LIST SITES"

```
C:\Windows\system32\NTDSUTIL.exe
Found 1 domain(s)
0 - DC=...,DC=k12,DC=edu
select operation target: SELECT DOMAIN 0
No current site
Domain - DC=...,DC=k12,DC=edu
No current server
No current Naming Context
select operation target: LIST SITES
Found 1 site(s)
0 - CN=Default-First-Site-Name,CN=Sites,CN=Configuration,DC=...,DC=k12,DC=edu
select operation target:
```

TYPE "SELECT SITE %SITE_NUMBER%"

- REPLACE %SITE_NUMBER% WITH THE FAILED SERVER'S SITES NUMBER

```
C:\Windows\system32\NTDSUTIL.exe
No current Naming Context
select operation target: LIST SITES
Found 1 site(s)
0 - CN=Default-First-Site-Name,CN=Sites,CN=Configuration,DC=...,DC=k12,DC=edu
select operation target: SELECT SITE 0
Site - CN=Default-First-Site-Name,CN=Sites,CN=Configuration,DC=...,DC=k12,DC=edu
Domain - DC=...,DC=k12,DC=edu
No current server
No current Naming Context
select operation target:
```

TYPE "LIST SERVERS IN SITE"

```
C:\Windows\system32\NTDSUTIL.exe
Site - CN=Default-First-Site-Name,CN=Sites,CN=Configuration,DC=...,DC=k12,DC=edu
Domain - DC=...,DC=k12,DC=edu
No current server
No current Naming Context
select operation target: LIST SERVERS IN SITE
Found 2 server(s)
0 - CN=TEACH,CN=Servers,CN=Default-First-Site-Name,CN=Sites,CN=Configuration,DC=...,DC=k12,DC=edu
1 - CN=CHS-PRIME1,CN=Servers,CN=Default-First-Site-Name,CN=Sites,CN=Configuration,DC=...,DC=k12,DC=edu
select operation target:
```

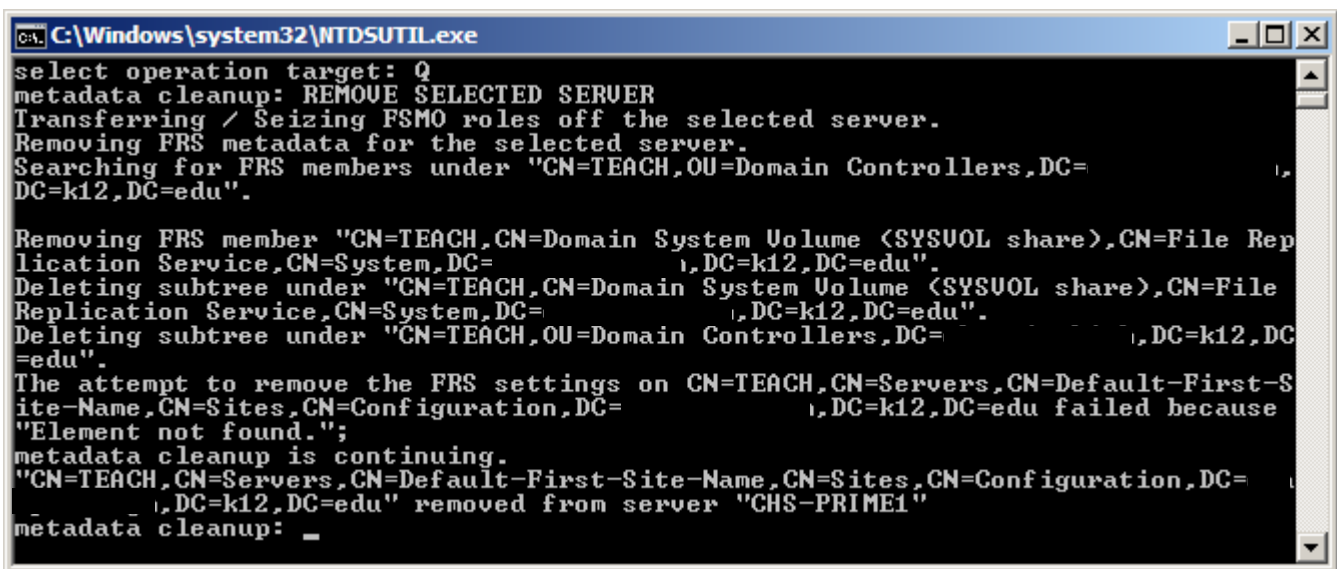
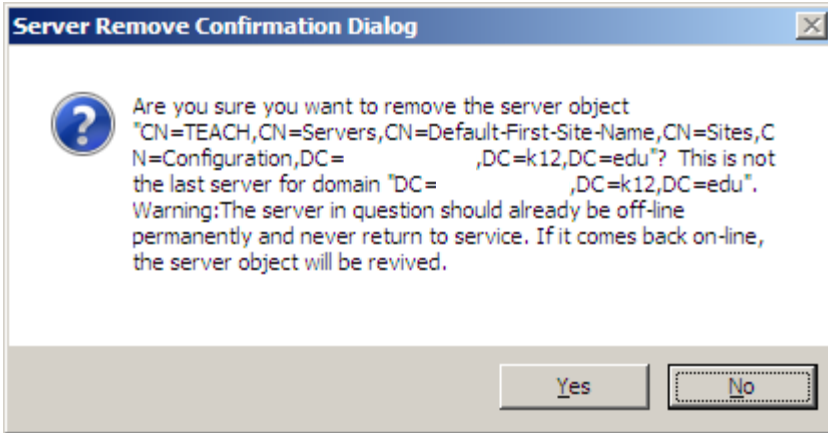
NOTICE: TWO SERVERS ARE LISTED - 0 IS THE FAILED DC; 1 IS THE OPERATING DC

TYPE "SELECT SERVER %SERVER_NUMBER%"

- REPLACE %SERVER_NUMBER% WITH THE FAILED SERVER'S NUMBER

```
C:\Windows\system32\NTDSUTIL.exe
select operation target: SELECT SERVER 0
Site - CN=Default-First-Site-Name,CN=Sites,CN=Configuration,DC=...,DC=k12,DC=edu
Domain - DC=championhigh,DC=k12,DC=edu
Server - CN=TEACH,CN=Servers,CN=Default-First-Site-Name,CN=Sites,CN=Configuration,DC=...,DC=k12,DC=edu
Name, CN=Sites,CN=Configuration,DC=...,DC=k12,DC=edu
DNS host name - teach. ...,k12.edu
Computer object - CN=TEACH,OU=Domain Controllers,DC=...,DC=k12,DC=edu
No current Naming Context
select operation target:
```

STEP BACKWARDS IN THE NTDSUTIL MENU, **TYPE "Q"**
AT THE METADATA CLEANUP PROMPT, **TYPE: "REMOVE SELECTED SERVER"**
A WARNING MESSAGE WILL APPEAR...



SERVER "TEACH" HAS BEEN REMOVED

NOTE: DUE TO THE SECURITY OF THE NETWORK USED IN THIS EXAMPLE, THE SPECIFICS OF THE DC CONFIGURATION OF BEEN HIDDEN. THE MISSING DATA WILL BE REPLACED WITH THE SPECIFICS OF YOUR DC CONFIGURATION. IF YOU HAVE ANY QUESTIONS OR CONCERNS, PLEASE CALL HUCOR TECHNOLOGIES AT 330-219-8301.